



\$ FOREST GREEN



\$ HARTFORD GREEN



★\$ MILITARY BLUE



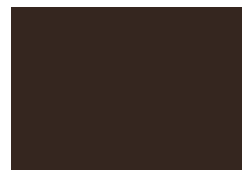
\$ BERKSHIRE BLUE



▲★\$ SLATE BLUE



\$ AWARD BLUE



\$ AGED BRONZE



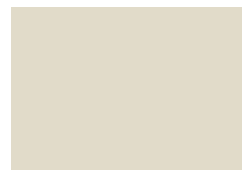
▲★\$ MEDIUM BRONZE



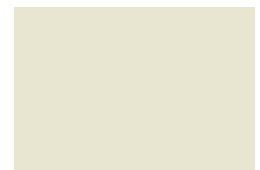
▲★\$ CARDINAL RED



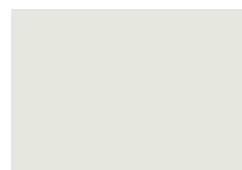
▲★\$ COLONIAL RED



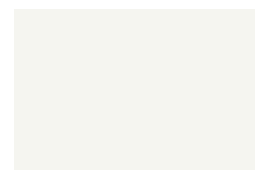
▲★\$ SANDSTONE



▲★\$ ALMOND



▲★\$ STONE WHITE

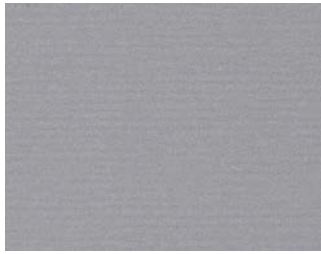


▲★\$ BONE WHITE

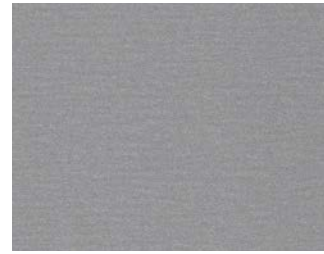
Color Guide

PAC-CLAD.COM

Premium Colors



●👑\$\$\$ ANODIC CLEAR



●👑\$\$\$ SILVERSMITH



●▲★👑\$\$\$ SILVER



●▲★👑\$\$\$ CHAMPAGNE



●▲★👑\$\$\$ ZINC



●▲★👑\$\$\$ WEATHERED ZINC



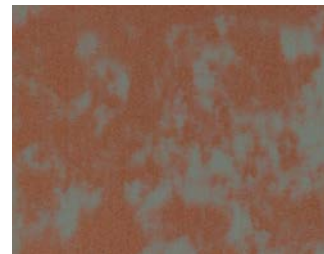
●▲★👑\$\$\$ COPPER PENNY



●▲★👑\$\$\$ AGED COPPER



👑\$\$\$ WEATHERED STEEL



👑\$\$\$ WEATHERED COPPER

Kynar 500® or Hylar 5000® pre-finished steel and aluminum for roofing, curtainwall and storefront applications.



- Metallic Colors
- ★ ENERGY STAR® Colors
- 👑 Premium Colors
- ▲ Cool Colors
- \$\$\$ Pricing

See back for color availability chart.

Standard Colors



▲★\$ PATINA GREEN



▲★\$ TEAL



▲★\$ HEMLOCK GREEN



\$ FOREST GREEN



\$ HARTFORD GREEN



▲★\$ EVERGREEN



▲★\$ HUNTER GREEN



▲★\$ ARCADIA GREEN



★\$ MILITARY BLUE



\$ BERKSHIRE BLUE



\$ GRAPHITE



▲★\$ CHARCOAL



\$ INTERSTATE BLUE



▲★\$ SLATE BLUE



\$ AWARD BLUE



\$ MATTE BLACK



▲★\$ DARK BRONZE



\$ BURNISHED SLATE



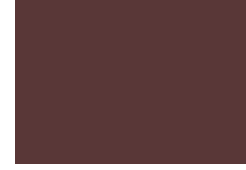
\$ AGED BRONZE



▲★\$ MEDIUM BRONZE



▲★\$ MANSARD BROWN



\$ BURGUNDY



▲★\$ TERRA COTTA



▲★\$ CARDINAL RED



▲★\$ COLONIAL RED



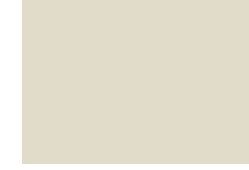
\$ MIDNIGHT BRONZE



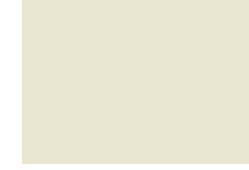
▲★\$ MUSKET GRAY



▲★\$ SIERRA TAN



▲★\$ SANDSTONE



▲★\$ ALMOND



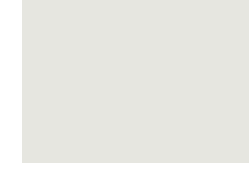
▲★\$ SLATE GRAY



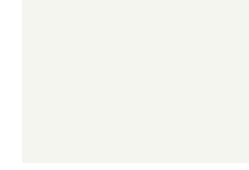
★\$ CITYSCAPE



▲★\$ GRANITE



▲★\$ STONE WHITE



▲★\$ BONE WHITE



PAC-CLAD
P E T E R S E N

HQ: 800 PAC CLAD TX: 800 441 8661 MD: 800 344 1400
AZ: 833 750 1935 GA: 800 272 4482 MN: 877 571 2025

PAC-CLAD.COM

PAC-CLAD® Color Availability

| PAC-CLAD STANDARD COLORS | REFLECTIVITY | EMISSION | 3 YEAR EXPOSURE | SRI | STEEL | | ALUMINUM | | | | ENERGY STAR |
|--|--------------|----------|-----------------|-----|--------|--------|----------|------|------|------|-------------|
| | | | | | 24 GA. | 22 GA. | .032 | .040 | .050 | .063 | |
| AGED BRONZE | 0.29 | 0.86 | N/A | 29 | ✓ | | | | | | |
| ALMOND | 0.53 | 0.87 | 0.52 | 62 | ✓ | ✓ | ✓ | ✓ | ✓ | | ★ |
| ARCADIA GREEN | 0.31 | 0.88 | 0.32 | 32 | ✓ | | ✓ | | | | ★ |
| AWARD BLUE | 0.21 | 0.86 | 0.20 | 17 | ✓ | | ✓ | | ✓ | | |
| BERKSHIRE BLUE* | 0.26 | 0.87 | 0.25 | 25 | ✓ | | | | | | |
| BLACK ALUMINUM** | 0.20 | 0.86 | N/A | 17 | | | ✓ | ✓ | ✓ | ✓ | |
| MATTE BLACK STEEL** | 0.22 | 0.87 | 0.21 | 20 | ✓ | ✓ | | | | | |
| BONE WHITE | 0.67 | 0.86 | 0.64 | 81 | ✓ | ✓ | ✓ | ✓ | ✓ | ✓ | ★ |
| BURGUNDY | 0.24 | 0.87 | 0.23 | 23 | ✓ | | ✓ | | ✓ | | |
| BURNISHED SLATE | 0.32 | 0.86 | N/A | 33 | ✓ | | | | | | |
| CARDINAL RED | 0.37 | 0.86 | 0.36 | 39 | ✓ | | ✓ | | ✓ | | ★ |
| CHARCOAL | 0.27 | 0.87 | 0.27 | 27 | ✓ | | ✓ | | ✓ | | ★ |
| CITYSCAPE | 0.44 | 0.86 | 0.43 | 49 | ✓ | ✓ | ✓ | ✓ | ✓ | | ★ |
| COLONIAL RED | 0.32 | 0.88 | 0.32 | 34 | ✓ | | ✓ | ✓ | ✓ | | ★ |
| DARK BRONZE | 0.26 | 0.85 | 0.24 | 24 | ✓ | ✓ | ✓ | ✓ | ✓ | ✓ | ★ |
| EVERGREEN | 0.27 | 0.86 | 0.25 | 26 | ✓ | | ✓ | | | | ★ |
| FOREST GREEN | 0.10 | 0.87 | 0.10 | 6 | ✓ | ✓ | ✓ | ✓ | ✓ | | |
| GRANITE* | 0.32 | 0.87 | 0.33 | 33 | ✓ | ✓ | ✓ | ✓ | ✓ | | ★ |
| GRAPHITE | 0.29 | 0.86 | N/A | 29 | ✓ | | | | | | |
| HARTFORD GREEN | 0.29 | 0.86 | 0.30 | 29 | ✓ | | ✓ | ✓ | ✓ | | |
| HEMLOCK GREEN | 0.29 | 0.86 | 0.30 | 29 | ✓ | | ✓ | | ✓ | | ★ |
| HUNTER GREEN | 0.27 | 0.86 | 0.26 | 26 | ✓ | | ✓ | | | | ★ |
| INTERSTATE BLUE | 0.13 | 0.87 | 0.12 | 8 | ✓ | | ✓ | | ✓ | | |
| MANSARD BROWN | 0.29 | 0.86 | 0.27 | 29 | ✓ | ✓ | ✓ | ✓ | ✓ | | ★ |
| MEDIUM BRONZE | 0.26 | 0.88 | 0.25 | 26 | ✓ | ✓ | ✓ | ✓ | ✓ | ✓ | ★ |
| MIDNIGHT BRONZE | 0.06 | 0.88 | N/A | 0 | ✓ | | | ✓ | | | |
| MILITARY BLUE | 0.29 | 0.87 | 0.28 | 29 | ✓ | | ✓ | | | | ★ |
| MUSKET GRAY | 0.31 | 0.87 | 0.30 | 32 | ✓ | ✓ | ✓ | | ✓ | | ★ |
| PATINA GREEN | 0.33 | 0.86 | 0.32 | 34 | ✓ | | ✓ | | | | ★ |
| SANDSTONE | 0.49 | 0.87 | 0.49 | 56 | ✓ | ✓ | ✓ | ✓ | ✓ | ✓ | ★ |
| SIERRA TAN | 0.36 | 0.87 | 0.36 | 39 | ✓ | ✓ | ✓ | ✓ | ✓ | | ★ |
| SLATE BLUE | 0.25 | 0.87 | 0.24 | 24 | ✓ | | ✓ | | | | ★ |
| SLATE GRAY | 0.37 | 0.88 | 0.36 | 40 | ✓ | ✓ | ✓ | ✓ | ✓ | | ★ |
| STONE WHITE | 0.64 | 0.87 | 0.61 | 77 | ✓ | ✓ | ✓ | ✓ | ✓ | ✓ | ★ |
| TEAL | 0.26 | 0.87 | 0.26 | 25 | ✓ | | ✓ | | | | ★ |
| TERRA COTTA | 0.36 | 0.88 | 0.35 | 39 | ✓ | | ✓ | | ✓ | | ★ |
| PAC-CLAD PREMIUM COLORS | | | | | | | | | | | |
| AGED COPPER | 0.26 | 0.87 | 0.25 | 25 | ✓ | | ✓ | | ✓ | | ★ |
| ANODIC CLEAR | 0.54 | 0.81 | N/A | 61 | | | | ✓ | | | |
| CHAMPAGNE | 0.40 | 0.82 | 0.36 | 42 | ✓ | | ✓ | ✓ | ✓ | | ★ |
| COPPER PENNY | 0.47 | 0.87 | 0.44 | 53 | ✓ | | ✓ | ✓ | ✓ | | ★ |
| SILVER | 0.49 | 0.81 | 0.46 | 54 | ✓ | ✓ | ✓ | ✓ | ✓ | | ★ |
| SILVERSMITH | 0.53 | 0.81 | N/A | 60 | | | ✓ | | | | |
| WEATHERED COPPER | 0.45 | 0.88 | N/A | 51 | ✓ | | | | | | |
| WEATHERED STEEL | 0.32 | 0.89 | N/A | 34 | ✓ | | | | | | |
| WEATHERED ZINC | 0.26 | 0.82 | 0.23 | 23 | ✓ | ✓ | ✓ | | ✓ | | ★ |
| ZINC | 0.33 | 0.88 | 0.32 | 35 | ✓ | | ✓ | ✓ | ✓ | | ★ |
| CLEAR-COAT ACRYLIC FINISH (NON-KYNAR) | | | | | | | | | | | |
| GALVALUME PLUS | 0.68 | 0.14 | 0.55 | 57 | ✓ | ✓ | | | | | |

PAC-CLAD Premium finishes are available from stock at a moderate extra cost. PAC-CLAD Copper Penny is a Non-Weathering finish. Solar Reflectance Index calculated according to ASTM E-1980.

*Low Gloss/Low Sheen, full 70% PVDF finish ** Appearance differs for Black Aluminum and Matte Black Steel

ENERGY STAR PERFORMANCE CRITERIA:

Emissivity uses ASTM C1371 Reflectivity uses ASTM C1549.

TECHNICAL DATA FOR KYNAR 500/HYLAR 5000 COATING:

- ▶ South Florida Exposure: Color (ASTM D 2244) - No more than 5ΔE Hunter units at 20 years; Chalk (ASTM D 4214) - Rating no less than 8 at 20 years; Film integrity - 20 years.
- ▶ Accelerated Weathering (ASTM D 4587, ASTM G 154): 5000 Hours; Chalk, per ASTM D 4214, rating of 6 or better; Color, per ASTM D 2244, < 5ΔE (Hunter Units) color change.

- ▶ Humidity Resistance (ASTM D 2247): Galvalume or HDG, 100% RH, 2000 hours - No field blisters; Aluminum, 100% RH, 3000 hours - No field blisters
- ▶ Salt Spray Resistance (ASTM B 117): Aluminum, 3000 hours, Galvalume or HDG, 1000 hours - Creep from scribe no more than 1/16", no field blisters
- ▶ Chemical/Acid Pollution Resistance (ASTM D 1308): Pass
- ▶ T-Bend (ASTM D 4145): 1T - 3T with no loss of adhesion
- ▶ Pencil hardness (ASTM D 3363): HB - 2H
- ▶ Specular Gloss (ASTM D 523) @ 60 degrees: Typical - 20 - 35

- ▶ Abrasion Resistance (ASTM D 968): 67 +/- 10 liters
- ▶ Cross Hatch Adhesion (ASTM D 3359): No loss of adhesion
- ▶ Reverse Impact (ASTM D 2794): Galvalume or HDG, 2x metal thickness inch-pounds, no loss of adhesion; Aluminum, 1.5x metal thickness inch-pounds, no loss of adhesion
- ▶ Flame Test (ASTM E 84): Class A Coating